

MATERIALS AND FINISHES

BODY ZINC ALLOY
PLATED NICKEL

HOUSING POLYESTER BUTYLENE TEREPHTHALATE(WHITE)

CENTER CONTACT PHOSPHOR BRONZE
PLATED GOLD

INSULATOR TEFLON

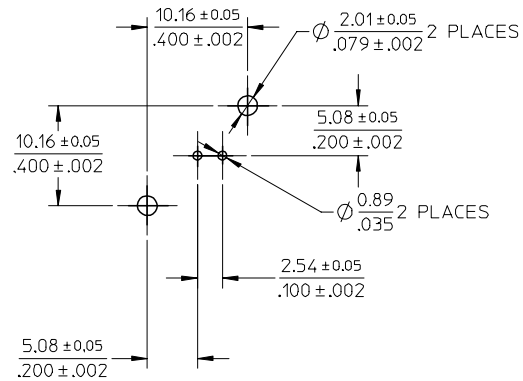
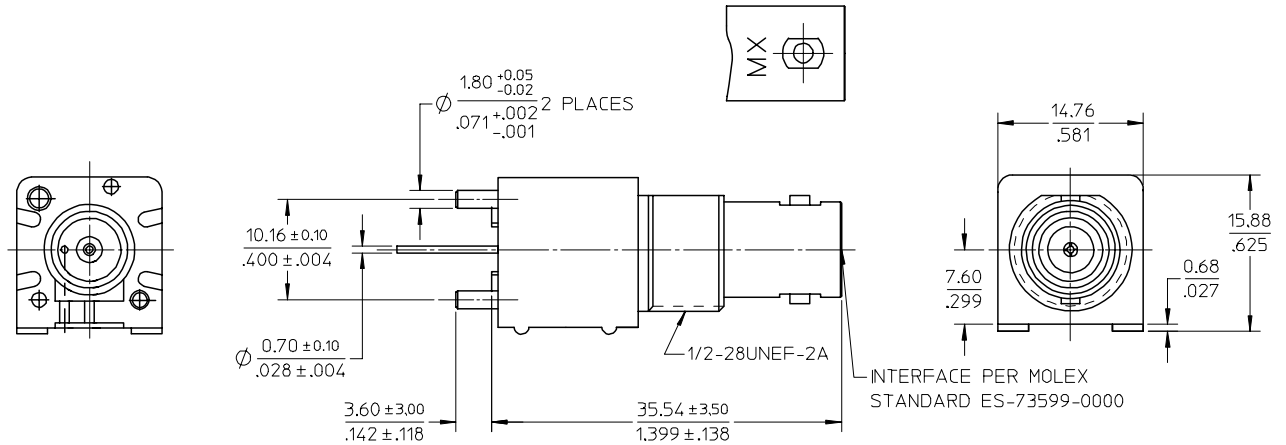
MOUNTING POST BRASS
PLATED TIN

SOLDER TAIL BRASS WIRE
PLATED TIN

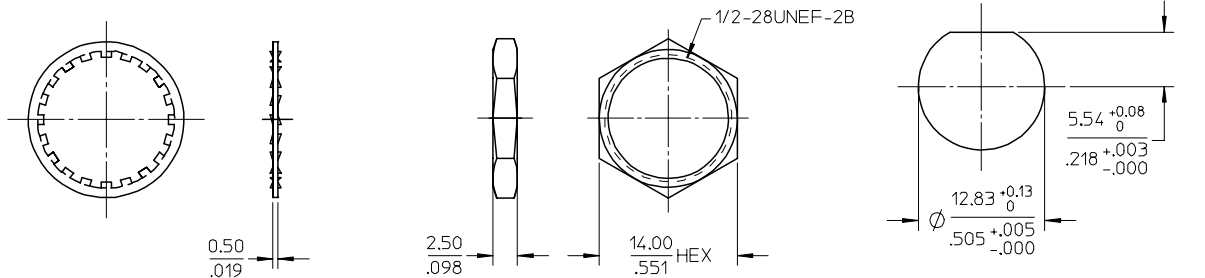
WASHER PHOSPHOR BRONZE
PLATED NICKEL

NUT BRASS
PLATED NICKEL

MECHANICAL & ELECTRICAL CHARACTERISTICS:
PER PRODUCT SPECIFICATION PS-73598-0060



PCB HOLE CONFIGURATION



RECOMMENDED MOUNTING HOLE
MAXIMUM PANEL THICKNESS:5.50MM
RECOMMENDED MOUNTING TORQUE
12 inch-pounds MAX.

ENTER DESCRIPTION EC NO: URF2005-0553 DRWN:CLLI CHKD: APPR:MHUANG	2005/06/28 2005/06/29	QUALITY SYMBOLS ▽=0 ▽C=0	GENERAL TOLERANCES (UNLESS SPECIFIED)		DIMENSION STYLE MM/IN	SCALE ---	DESIGN UNITS METRIC	THIRD ANGLE PROJECTION		
	DESCRIPTION REV		mm INCH	DRAWN BY CLLI	DATE 2005/06/06	TITLE BNC 75 OHM VERTICAL PCB RECEPTACLE BNC-J/PCB		MOLEX INCORPORATED		
			4 PLACES ± --- ± --- 3 PLACES ± --- ± --- 2 PLACES ± 0.13 ± --- 1 PLACE ± 0.25 ± ---	CHECKED BY PENNY	DATE 2005/06/06					
			ANGULAR ± 2 °	APPROVED BY MISEN	DATE 2005/06/06					
		DRAFT WHERE APPLICABLE MUST REMAIN WITHIN DIMENSIONS	MATERIAL NO. 73101-0680	DOCUMENT NO. SD-73101-068	SHEET NO. 1 OF 1					